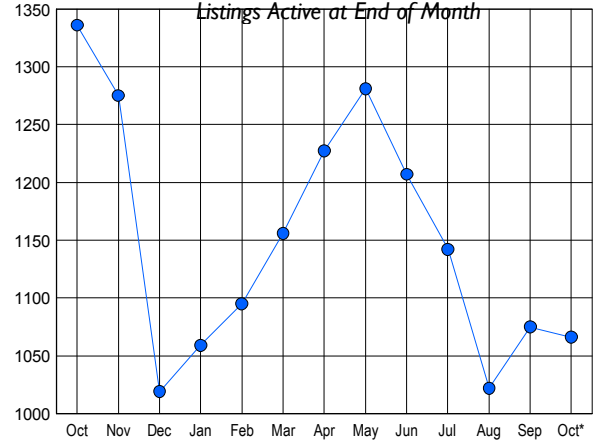


LISTINGS

Price Range	New This Month			Total Actives		
	2011	2010	% Change	2011	2010	% Change
0 - 149,999	31	46	-32.6	116	159	-27.0
150,000 - 199,999	24	35	-31.4	105	163	-35.6
200,000 - 299,999	64	80	-20.0	251	299	-16.1
300,000 - 399,999	73	104	-29.8	189	234	-19.2
400,000 - 499,999	65	57	14.0	138	158	-12.7
500,000 - 599,999	34	56	-39.3	91	100	-9.0
600,000 - 699,999	23	30	-23.3	40	71	-43.7
700,000 - 799,999	21	18	16.7	33	29	13.8
800,000 - 899,999	5	13	-61.5	18	29	-37.9
900,000 - 999,999	2	8	-75.0	16	26	-38.5
1,000,000 - 1,249,999	2	2	0.0	22	20	10.0
1,250,000 - 1,499,999	5	5	0.0	13	18	-27.8
1,500,000 +	10	8	25.0	34	30	13.3
TOTALS	359	462	-22.3	1066	1336	-20.2

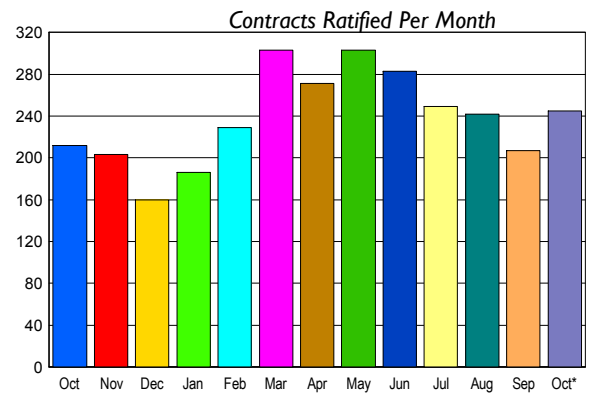
INVENTORY TREND



CONTRACTS

Price Range	New This Month			Year-To-Date		
	2011	2010	% Change	2011	2010	% Change
0 - 149,999	29	18	61.1	229	157	45.9
150,000 - 199,999	21	20	5.0	147	178	-17.4
200,000 - 299,999	47	28	67.9	465	447	4.0
300,000 - 399,999	68	52	30.8	575	674	-14.7
400,000 - 499,999	38	27	40.7	390	442	-11.8
500,000 - 599,999	20	31	-35.5	250	265	-5.7
600,000 - 699,999	7	13	-46.2	115	122	-5.7
700,000 - 799,999	3	7	-57.1	74	78	-5.1
800,000 - 899,999	1	4	-75.0	39	33	18.2
900,000 - 999,999	1	5	-80.0	27	33	-18.2
1,000,000 - 1,249,999	1	2	-50.0	25	23	8.7
1,250,000 - 1,499,999	1	3	-66.7	22	24	-8.3
1,500,000 +	8	2	300.0	28	33	-15.2
TOTALS	245	212	15.6	2386	2509	-4.9

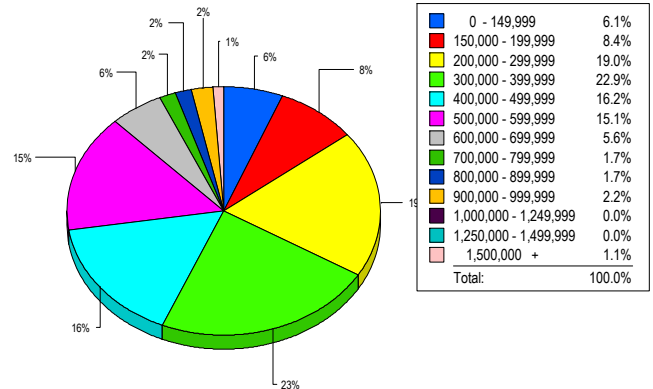
SALES TREND



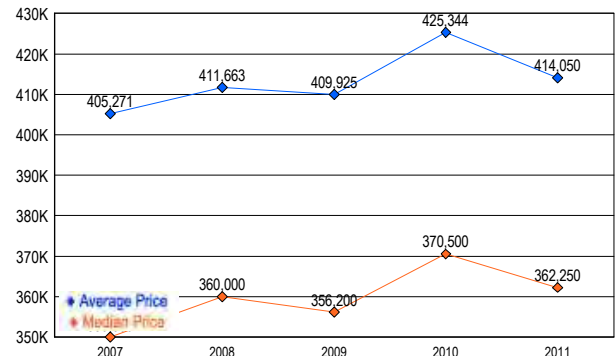
SETTLEMENTS

Price Range	New This Month			Year-To-Date		
	2011	2010	% Change	2011	2010	% Change
0 - 149,999	11	13	-15.4	208	145	43.4
150,000 - 199,999	15	5	200.0	130	158	-17.7
200,000 - 299,999	34	27	25.9	435	441	-1.4
300,000 - 399,999	41	45	-8.9	559	618	-9.5
400,000 - 499,999	29	30	-3.3	368	414	-11.1
500,000 - 599,999	27	22	22.7	247	228	8.3
600,000 - 699,999	10	11	-9.1	118	122	-3.3
700,000 - 799,999	3	10	-70.0	76	66	15.2
800,000 - 899,999	3	4	-25.0	36	35	2.9
900,000 - 999,999	4	3	33.3	26	21	23.8
1,000,000 - 1,249,999	0	0	0.0	28	31	-9.7
1,250,000 - 1,499,999	0	2	-100.0	18	21	-14.3
1,500,000 +	2	2	0.0	21	27	-22.2
TOTALS	179	174	2.9	2270	2327	-2.4

MARKET BY PRICE RANGE



AVERAGE & MEDIAN PRICE



DATA SOURCE: Metropolitan Regional Information Systems, Inc. (MRIS)

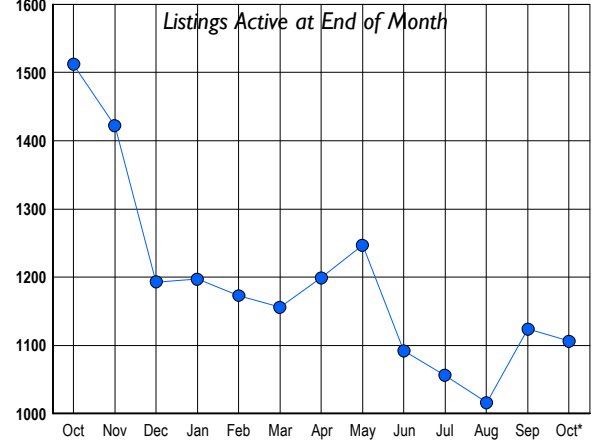
NOTES: Properties not listed through this Multiple Listing Service are not reflected. The term "sales" represents ratified purchase contracts. Current year information is preliminary and subject to revision. Current year-to-date contract information may not equal the sum of the monthly contract totals reported in



LISTINGS

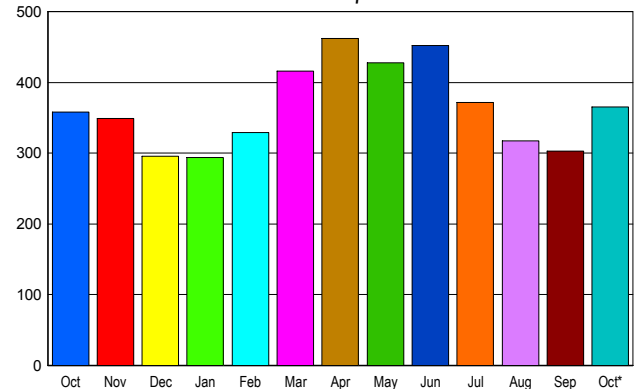
Prices Range	New This Month			Total Actives		
	2011	2010	% Change	2011	2010	% Change
0 - 149,999	42	48	-12.5	121	172	-29.7
150,000 - 199,999	32	42	-23.8	94	162	-42.0
200,000 - 299,999	64	92	-30.4	165	240	-31.3
300,000 - 399,999	59	70	-15.7	121	191	-36.6
400,000 - 499,999	38	57	-33.3	90	135	-33.3
500,000 - 599,999	38	44	-13.6	73	92	-20.7
600,000 - 699,999	31	33	-6.1	64	64	0.0
700,000 - 799,999	35	41	-14.6	68	75	-9.3
800,000 - 899,999	21	32	-34.4	36	67	-46.3
900,000 - 999,999	13	26	-50.0	30	44	-31.8
1,000,000 - 1,249,999	19	24	-20.8	47	52	-9.6
1,250,000 - 1,499,999	17	23	-26.1	38	51	-25.5
1,500,000 +	35	37	-5.4	159	167	-4.8
TOTALS	444	569	-22.0	1106	1512	-26.9

INVENTORY TREND



SALES TREND

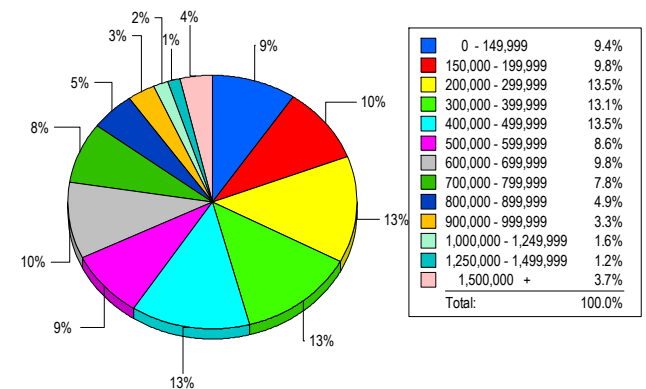
Contracts Ratified Per Month



CONTRACTS

Price Range	New This Month			Year-To-Date		
	2011	2010	% Change	2011	2010	% Change
0 - 149,999	39	39	0.0	337	411	-18.0
150,000 - 199,999	33	29	13.8	278	257	8.2
200,000 - 299,999	61	60	1.7	496	605	-18.0
300,000 - 399,999	57	43	32.6	479	415	15.4
400,000 - 499,999	38	36	5.6	341	348	-2.0
500,000 - 599,999	23	31	-25.8	244	242	0.8
600,000 - 699,999	31	27	14.8	247	251	-1.6
700,000 - 799,999	21	21	0.0	282	274	2.9
800,000 - 899,999	17	17	0.0	191	177	7.9
900,000 - 999,999	9	16	-43.8	106	101	5.0
1,000,000 - 1,249,999	9	13	-30.8	131	122	7.4
1,250,000 - 1,499,999	11	13	-15.4	102	127	-19.7
1,500,000 +	17	13	30.8	158	151	4.6
TOTALS	366	358	2.2	3392	3481	-2.6

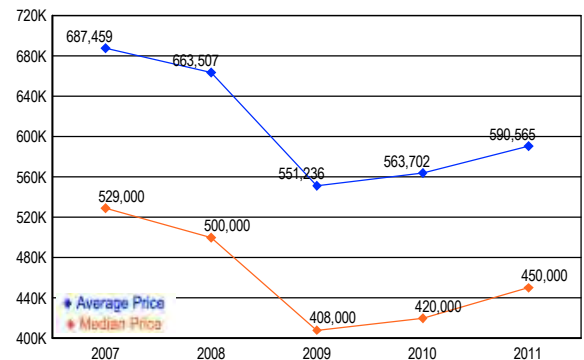
MARKET BY PRICE RANGE



SETTLEMENTS

Price Range	New This Month			Year-to-Date		
	2011	2010	% Change	2011	2010	% Change
0 - 149,999	23	38	-39.5	332	386	-14.0
150,000 - 199,999	24	12	100.0	243	235	3.4
200,000 - 299,999	33	38	-13.2	434	563	-22.9
300,000 - 399,999	32	46	-30.4	435	418	4.1
400,000 - 499,999	33	28	17.9	303	296	2.4
500,000 - 599,999	21	22	-4.5	242	231	4.8
600,000 - 699,999	24	19	26.3	236	218	8.3
700,000 - 799,999	19	21	-9.5	272	280	-2.9
800,000 - 899,999	12	18	-33.3	199	174	14.4
900,000 - 999,999	8	8	0.0	97	88	10.2
1,000,000 - 1,249,999	4	26	-84.6	150	145	3.4
1,250,000 - 1,499,999	3	16	-81.3	81	98	-17.3
1,500,000 +	9	11	-18.2	153	126	21.4
TOTALS	245	303	-19.1	3177	3258	-2.5

AVERAGE & MEDIAN PRICE



DATA SOURCE: Metropolitan Regional Information Systems, Inc. (MRIS)

NOTES: Properties not listed through this Multiple Listing Service are not reflected. The term "sales" represents ratified purchase contracts. Current year information is preliminary and subject to revision. Current year-to-date contract information may not equal the sum of the monthly contract totals reported in